

Installation Instructions

CoolBalance® CB33, CB33EP, CB33S Circular Seals [R. 02.2015]



CB33/CB33S



CB33EP

CB33 Product Line Specifications

Model Numbering System:

CB3304- for holes smaller than 4.5 inches in diameter

CB3306- for holes smaller than 6.75 inches in diameter

Kits Include:

CB33- High-impact black ABS plastic holder, Sealeze high-quality nylon brush (assembled)

(4) #12 self-tapping screws, black

CB33EP- High-impact black ABS plastic holder, Sealeze high-quality nylon brush, PVC pipe (assembled)

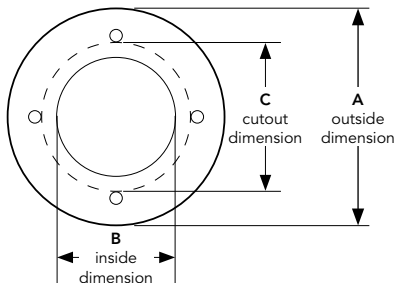
(4) #12 self-tapping screws, black

CB33S- High-impact black ABS plastic split-ring holder, Sealeze high-quality nylon brush (assembled)

(4) #12 self-tapping screws, black

Tools Required:

- Floor cutting saw (new installation)
- Phillips Screw Driver or Drill with Phillips bit
- Double-sided tape (optional)
- Cleaner (optional)



Model	A Dim	B Dim	C Dim	Cut Out
CB3304	5.75	3.22	4.50	4.75 or less
CB33EP04	5.75	3.22	4.50	4.75*
CB33S04	5.75	3.22	4.50	4.75 or less
CB3306	8.13	5.20	6.63	7.00 or less
CB33EP06	8.13	5.20	6.63	7.00*†
CB33S06	8.13	5.20	6.63	7.00 or less

* Cut out tolerance is +0.0625, -0.00 inches
† If a 7 inch hole saw is not available, a 6 31/32 will work

Ordering Information:

The CoolBalance CB33 line of seals is designed for small, round holes and is available in 3 configurations and 2 sizes to seal openings smaller than 6.75" diameter.

The CB33EP includes edge protection in the form of a pipe that fits down into the hole. Therefore the cutout dimensions are critical. To order the correct size, measure the circumference of the cutout and order the smallest size that will fit. Cutout tolerance is +1/16 in - 0.0

The CB33 and CB33S are surface mount seals providing more leeway in hole dimensions.

Use floor manufacturer's recommendation on cutting limitations and cutting tools. Design load capacity of the tile imposes limitations on the size and location of the cutout or may require additional supports. Consult the manufacturer's manuals.

Installation Instructions

CoolBalance® CB33 Surface Mount Grommet Products

For Installation Prior to Running Cables Use a CB33 or CB33EP model:

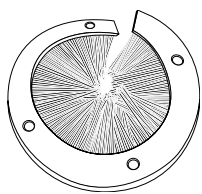
1. Smooth burrs on the top of the cutout. (If the hole is particularly rough-cut or there are sharp edges, use the CB33EP with edge protection.)
2. Clean dust and debris from around the top edges of the cutout.
3. Place the seal over the cutout to insure proper fit. (If using a CB33EP, the pipe should fit somewhat snugly into the hole.)
4. The holder should sit flat with little or no side to side movement.
5. Fasten securely using self-taping screws or with double-sided tape. (If using double-sided tape, remove the seal from the cutout, attach tape to the underside of the grommet and replace it, pressing it firmly into place.)
6. Do not over-torque the screws.

For Installation with Cables Use a CB33S:

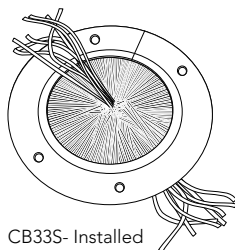
1. Make sure there are no sharp burrs on the top of the cutout.
2. Clean dust and debris from around the top edges of the cutout.
3. Carefully twist the seal frame open (see diagram below).
4. Place the seal around the cables and re-close the seal.
5. Seal should sit flat with little or no side to side movement.
5. Fasten securely using self-taping screws or with double-sided tape. (If using double-sided tape, remove the seal from the cutout, attach tape to the underside of the grommet and replace it, pressing it firmly into place.)
6. Do not over-torque the screws.

Effective Installation - Best Practices:

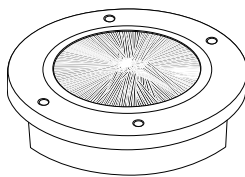
The purpose of the seal is to prevent the loss of cool air through the cutout. While the CB33 models are effective seals, there are steps the installer can take to improve the effectiveness of the seal. Where possible, bundle like cables using cable tie wraps. This keeps the gaps to a minimum.



CB33S



CB33S- Installed



CB33EP

Other CoolBalance® products for data center energy efficiency.

CB11 In-Floor Grommet

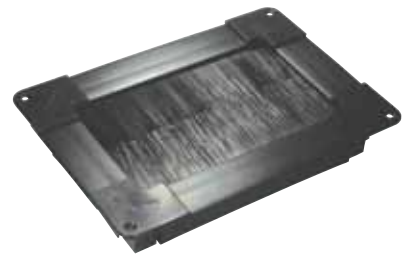
Construction:

In-floor flush mount with removable end for mounting around existing cables. Built in edge protects cables from rough edge cuts.

High impact ABS

Hole Sizes:

From 5 in x 5 in to 10 in x 24 in



CB22 Surface Mount Grommet

Construction:

Surface mount with removable end for mounting around existing cables.

High impact ABS

Hole Sizes:

From 5 in x 5 in to 10 in x 24 in

