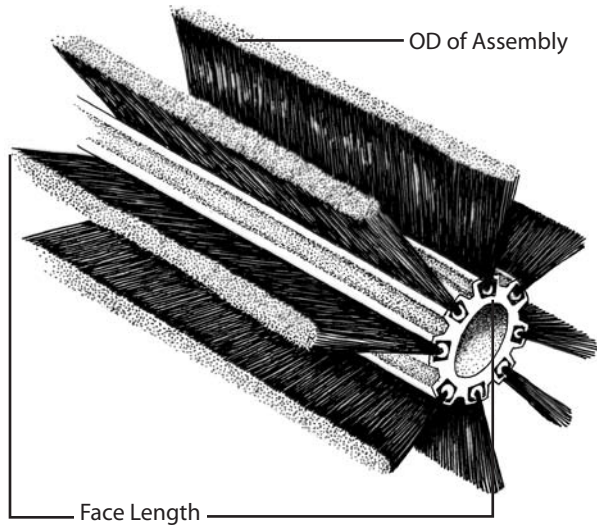


# Rotary Strip Brush Assemblies

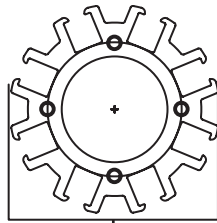
WORKSHEET  
IWR5BA.0909



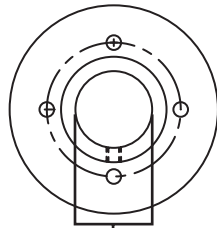
Contact Name: \_\_\_\_\_  
 Company Name: \_\_\_\_\_  
 Phone: \_\_\_\_\_  
 Fax: \_\_\_\_\_  
 Email: \_\_\_\_\_

## Series D

For mounting on 0.75 inch diameter shaft.



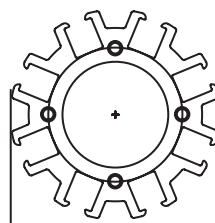
Outer Diameter (OD)  
2.220 in.



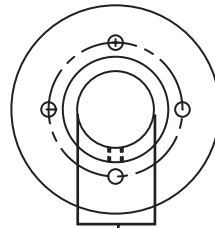
Inner Diameter (ID)  
0.750 in.

## Series G

For mounting on 1.00 inch diameter shaft.



Outer Diameter (OD)  
2.743 in.



Inner Diameter (ID)  
1.000 in.

### NOTE:

Illustrations are for reference only. For an engineering print of hub and extrusion, contact a Sealeze sales representative.

Quantity: \_\_\_\_\_ Annual Usage: \_\_\_\_\_

Channel Material:  
Galvanized, T-304 S/S, Other S/S available on request

Filament Material: \_\_\_\_\_

Level or Crimped Filament: \_\_\_\_\_

Filament Diameter: \_\_\_\_\_

OD of Assembly: \_\_\_\_\_

Face Length: \_\_\_\_\_

Mandrel? \_\_\_\_\_

(requires customer drawing)

Retaining Hubs? \_\_\_\_\_

Application: \_\_\_\_\_

8000 Whitepine Road  
Richmond, VA 23237

phone: 804-743-0982  
fax: 804-743-3413

toll free  
phone: 800-787-7325  
fax: 800-448-2908



industrial@sealeze.com  
www.sealeze.com

**Please feel free to contact us for assistance.**  
 804-743-0982 | 800-787-7325  
 industrial@sealeze.com

EXTRUSION MATERIAL: Aluminum Alloy 6063 T-5

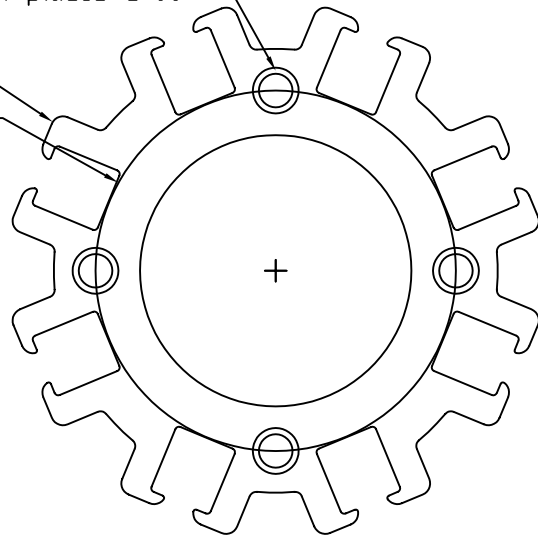
DIMENSIONS								
Section	CHANNEL				EXTRUSION			
	X		Y		OD		ID	
	in.	mm	in.	mm	in.	mm	in.	mm
D	0.240	6.096	0.256	6.502	2.220	56.388	1.125	28.575
G	0.350	8.890	0.370	9.398	2.743	69.672	1.375	34.925

Minimum Brush Assembly OD = 3.18 inches (80.77 mm)

REVISIONS				
ZONE	REV	DESCRIPTION	DATE	APPROVED
	B	Added instruction for set screw	5/11/01	MZ
	C	Added outside diameter reference on holding section	5/16/02	MZ

Drill and tap for  
10-24 machine screw  
1/2" deep, 4 places @ 90°

Ø2.221  
Ø1.495



XTD8X22CLA

Ø2.221 Ref.

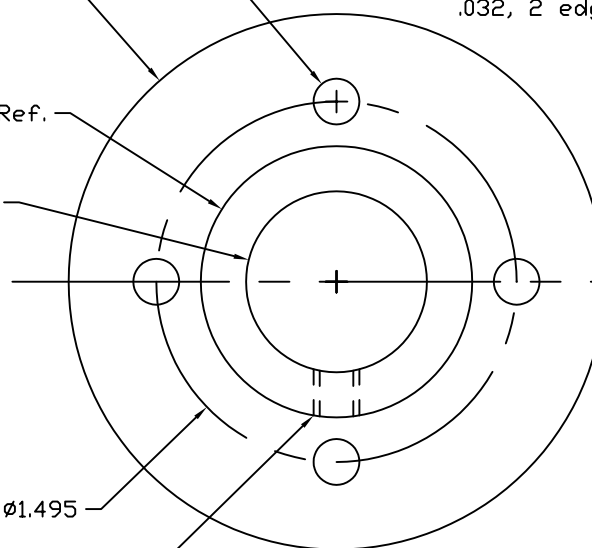
Ø0.190

Ø1.142 Ref.

Ø0.750

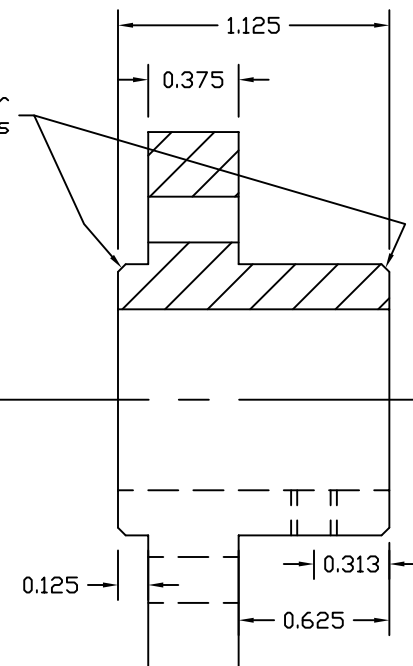
Ø1.495

Chamfer  
.032, 2 edges



HUB

Drill and tap for  
10-24 set screw



NOTES:

Hub for use with XTD8X22CLA holder.

Hub Material: Aluminum 6061

ALL DIMENSIONS ARE IN INCHES  
UNLESS OTHERWISE SPECIFIED.

DRAWN BY

MZ

CHECKED BY

MP

**SEALEZE**

A Unit of Jason Incorporated

Rotary Holder Mounting Hub

SIZE  
A

FSCM NO.

DWG NO.

S010027EM

REV  
C

SCALE

None

DATE

2/21/01

THIS DOCUMENT CONTAINS INFORMATION WHICH IS CONFIDENTIAL AND PROPRIETARY TO SEALEZE. NO DISCLOSURE, REPRODUCTION OR ANY USE OF ANY PART OF THIS DOCUMENT MAY BE MADE WITHOUT THE WRITTEN PERMISSION OF SEALEZE.

FNAME

REVDATE

USER