



Whether retrofitting an existing building or working on new construction, it is necessary to satisfy fire safety regulations for elevator pressurization.



### The Challenge: Elevator Hoistway Pressurization

Proper elevator hoistway pressurization can be solved for in many ways. The first and most expensive way is to install and utilize “elevator lobbies” on floors above ground level. The elevator lobbies are closed off by smoke partitions and doors to prevent smoke from entering the hoistway and migrating to the floors above.

Another option is to use an elevator hoistway pressurization system to pull air up and out the top of the elevator shaft, preventing smoke from escaping to areas that are completely remote from the source of the fire. Engineers use powerful fans within the elevator shaft to control smoke expansion. While the concept is simple, the execution can be tricky since pressurization can easily be compromised by little things such as a door opening or closing. Not only does this pose a safety risk, but it can cause a building to not meet proper code requirements.

The third option, which is the quickest and most cost-effective, is the use of industrial strip brush to solve for the hoistway pressurization.

### The Solution: SEALEZE® Industrial Strip Brush

SEALEZE® elevator industrial strip brush is an easy, low-cost solution for maintaining elevator hoistway pressurization. It is easy to install and offers a quick solution to hoistway pressurization problems. Additionally, our brush does not disrupt the design and look of the building, while an elevator lobby has the potential to do so. **Continued on page 2**

#### About Osborn

- Global leader in surface treatment and finishing solutions
- 1,250 employees worldwide
- Sales offices in 13 countries
- Customers in 120 countries
- Established in 1887

#### Project

Building occupancy requirements and elevator hoistway pressurization

---

*“I get calls daily from customers who have failed pressure occupancy tests. There is always a sense of panic as the potential costs to fix the problem are enormous. They are looking for a low-cost solution to seal the elevator shaft and pass occupancy tests. If they had given SEALEZE® a call at the start of the build they could have avoided that angst, since SEALEZE® brush maintains air pressure in the shaft at a fraction of the cost.”*

**Brendan Bombard**  
SEALEZE® Senior Business  
Development Manager

---



# CASE STUDY

*Continued from page 1*

**SEALEZE**® specializes in solving for challenging problems when it comes to hoistway pressurization. We will not just hand you a catalog for you to pick from an off-the-shelf product. We work directly with your team to create custom solutions. We have both standardized and customized brush solutions available. Our standardized order form includes common elevator entrance sizes and options. This is typically what is used in new construction.

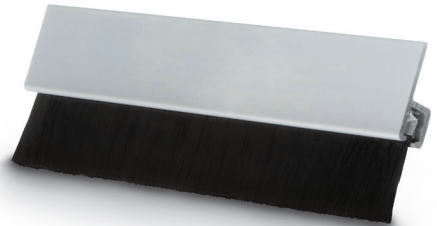
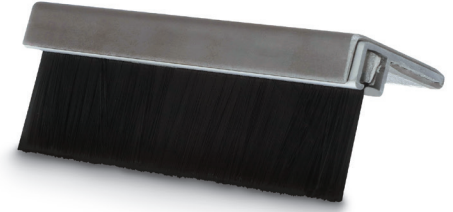
For custom solutions, our team of engineers can work with you to develop creative solutions that get the job done.

### The Results

By working with **SEALEZE**®, we can determine at any step during your project which type of elevator brush works best to meet your technical requirements and mechanical efficiencies. We make it easy to order both standard and custom parts to meet every building need. Whether you are building a new 20-story high-rise, or turning an old factory into an apartment building, we can come up with the best solution to meet your elevator needs.

In the long run, **SEALEZE**® brush is the most cost-effective solution because it is easy to maintain and replace over time.

For more information, visit [sealeze.com](http://sealeze.com).



### SEALEZE® Elevator Brush Benefits

- Low-Cost Solution to Maintaining Hoistway Pressurization
- Reduce Maintenance Cost - prevent outside debris and moisture from damaging equipment
- Sound Deadening - reduce sound in and from the elevator hoistway
- Durability - brushes and brush holders designed and life tested to withstand 2 million cycles
- Simple Install - easy installation with pre-drilled holes and fasteners provided
- UL approved for use on 3-hour fire doors
- Designed and Made in the USA

